

$L > 100 \text{ m}^*$   
UNE-EN 61537  
UNE-EN 50085

UNE-EN 61537  
UNE-EN 50085  
UNE 23727

150°C  
-50°C  
UNE-EN 61537

120°C  
-25°C  
UNE-EN 50085

3 5  
9A  
UNE-EN 61537

20J  
UNE-EN 61537  
UNE-EN 50085



IP44  
IEC 60529

IP23  
IEC 60529

IK10  
IEC 50102

IK07  
IEC 50102



CPERC



TCPERC



CCERC



TCCERC



CXERC



TCXERC



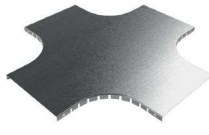
TERC



TTERC



CRERC



TCRERC



AS



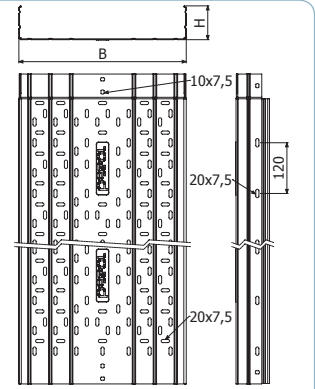
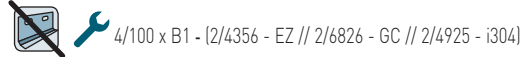
TAS

B		Filling Area	
		H80 (3 1/7")	
mm	inch	cm <sup>2</sup>	in <sup>2</sup>
100	4"	78	12,0
150	6"	118	18,2
200	8"	158	24,4
300	12"	238	36,8
400	16"	317	49,1
500	20"	397	61,5
600	24"	477	73,9

## NRE-BP H80



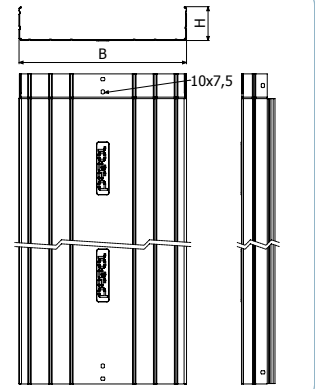
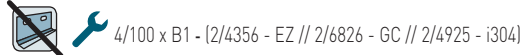
	B		H		PG		GC	
	mm	inch	mm	inch	REF.	kg/m	REF.	kg/m
BP NRE 100X80X0,7	100	4"	80	3 1/8"	2/17809	1,12	2/1235	1,68
BP NRE 150X80X0,7	150	6"	80	3 1/8"	2/17810	1,34	2/1236	2
BP NRE 200X80X0,8	200	8"	80	3 1/8"	2/17811	1,64	2/1237	2,24
BP NRE 300X80X1	300	12"	80	3 1/8"	2/8763	3,74	2/10033	4,11
BP NRE 400X80X1	400	16"	80	3 1/8"	2/8764	4,54	2/10034	4,99
BP NRE 500X80X1	500	20"	80	3 1/8"	2/8765	5,34	2/10035	5,87
BP NRE 600X80X1	600	24"	80	3 1/8"	2/8766	6,14	2/10036	6,85



## NRE-BC H80



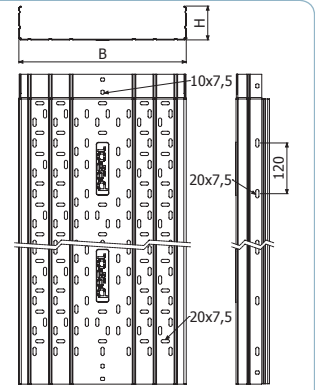
	B		H		PG		GC	
	mm	inch	mm	inch	REF.	kg/m	REF.	kg/m
BC NRE 100X80X0,7	100	4"	80	3 1/8"	2/17812	1,15	2/1295	1,72
BC NRE 150X80X0,7	150	6"	80	3 1/8"	2/17813	1,37	2/1296	2,03
BC NRE 200X80X0,8	200	8"	80	3 1/8"	2/17814	1,73	2/1297	2,36
BC NRE 300X80X1	300	12"	80	3 1/8"	2/8773	3,74	2/10037	4,11
BC NRE 400X80X1	400	16"	80	3 1/8"	2/8774	4,54	2/10038	4,99
BC NRE 500X80X1	500	20"	80	3 1/8"	2/8775	5,34	2/10039	5,87
BC NRE 600X80X1	600	24"	80	3 1/8"	2/8776	6,14	2/10040	6,85



## NRE-BP H80



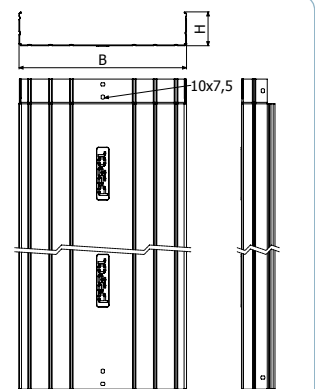
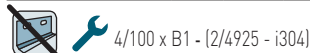
	B		H		i304		i316	
	mm	inch	mm	inch	REF.	kg/m	REF.	kg/m
BP NRE 100X80X0,7	100	4"	80	3 1/8"	2/17830	1,48	2/18140	1,48
BP NRE 150X80X0,7	150	6"	80	3 1/8"	2/17831	1,71	2/18141	1,71
BP NRE 200X80X0,8	200	8"	80	3 1/8"	2/17832	2,27	2/18142	2,27
BP NRE 300X80X1	300	12"	80	3 1/8"	2/17833	3,51	2/18143	3,51
BP NRE 400X80X1	400	16"	80	3 1/8"	2/17834	4,32	2/18144	4,32
BP NRE 500X80X1	500	20"	80	3 1/8"	2/17835	5,04	2/18145	5,04
BP NRE 600X80X1	600	24"	80	3 1/8"	2/17836	5,75	2/18146	5,75



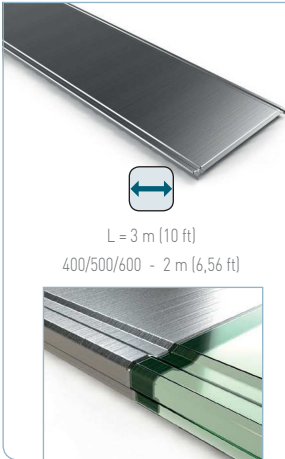
## NRE-BC H80



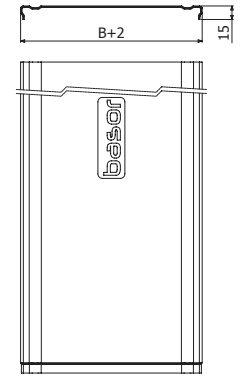
	B		H		i304		i316	
	mm	inch	mm	inch	REF.	kg/m	REF.	kg/m
BC NRE 100X80X0,7	100	4"	80	3 1/8"	2/17837	1,51	2/18147	1,51
BC NRE 150X80X0,7	150	6"	80	3 1/8"	2/17838	1,78	2/18148	1,78
BC NRE 200X80X0,8	200	8"	80	3 1/8"	2/17839	2,36	2/18149	2,36
BC NRE 300X80X1	300	12"	80	3 1/8"	2/17840	3,79	2/18150	3,79
BC NRE 400X80X1	400	16"	80	3 1/8"	2/17841	4,61	2/18151	4,61
BC NRE 500X80X1	500	20"	80	3 1/8"	2/17842	5,41	2/18152	5,41
BC NRE 600X80X1	600	24"	80	3 1/8"	2/17843	6,19	2/18153	6,19



## TNRE



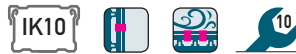
	B		PG		GC		i304	
	mm	inch	REF.	kg/m	REF.	kg/m	REF.	kg/m
TNER 100	100	4"	2/1312	0,55	2/1321	0,82	2/4560	0,55
TNER 150	150	6"	2/1313	0,76	2/1322	1,14	2/5123	0,76
TNER 200	200	8"	2/1314	0,98	2/1323	1,46	2/4561	0,98
TNER 300	300	12"	2/1316	1,55	2/1325	2,11	2/4716	1,55
TNER 400 2M	400	16"	2/1317	2,19	2/1326	2,75	2/4931	2,73
TNER 500 2M	500	20"	2/1318	3,11	2/1327	3,85	2/4562	3,75
TNER 600 2M	600	24"	2/1319	3,95	2/1328	4,58	2/5357	4,01



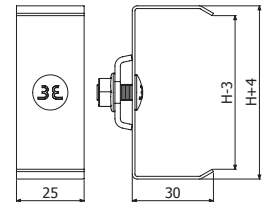
## PTNRE



	H		i304	
	mm	inch	REF.	kg/u
PTNER 35	35	1 3/8"	2/7059	0,05
PTNER 60	60	2 3/8"	2/7060	0,05
PTNER 80	80	3 1/7"	2/7061	0,06
PTNER 100	100	4"	2/7062	0,06



4 x PTERE => 1 x TERE

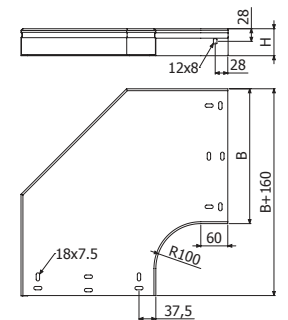
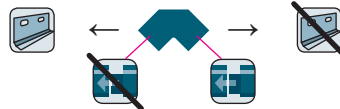


## CPERC



	B		H		PG		GC		i316	
	mm	inch	mm	inch	REF.	kg/u	REF.	kg/u	REF.	kg/u
CPERC 100x80	100	4"	80	3 1/7"	2/1352	0,96	2/1383	1,09	2/18161	0,96
CPERC 150x80	150	6"	80	3 1/7"	2/1353	1,23	2/1384	1,41	2/18162	1,23
CPERC 200x80	200	8"	80	3 1/7"	2/1354	1,54	2/1385	1,76	2/18163	1,54
CPERC 300x80	300	12"	80	3 1/7"	2/1356	2,29	2/1387	2,61	2/18164	2,29
CPERC 400x80	400	16"	80	3 1/7"	2/1357	3,18	2/1388	3,63	2/18165	3,18
CPERC 500x80	500	20"	80	3 1/7"	2/1358	4,24	2/1389	4,83	2/18166	4,24
CPERC 600x80	600	24"	80	3 1/7"	2/1359	5,45	2/1390	6,21	2/18167	5,45

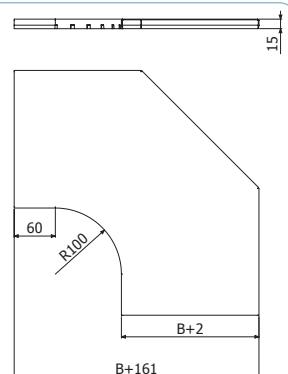
2 x JUER



## TCPERC



	B		PG		GC		i304	
	mm	inch	REF.	kg/u	REF.	kg/u	REF.	kg/m
TCPERC 100	100	4"	2/1430	0,27	2/1437	0,31	2/3560	0,27
TCPERC 150	150	6"	2/1431	0,41	2/1438	0,48	2/3561	0,41
TCPERC 200	200	8"	2/1432	0,57	2/1439	0,67	2/3562	0,57
TCPERC 300	300	12"	2/1433	0,97	2/1440	1,13	2/3563	0,97
TCPERC 400	400	16"	2/1434	1,46	2/1441	1,71	2/4752	1,46
TCPERC 500	500	20"	2/1435	2,04	2/1442	2,39	2/3564	2,09
TCPERC 600	600	24"	2/1436	2,71	2/1443	3,17	2/4753	2,71

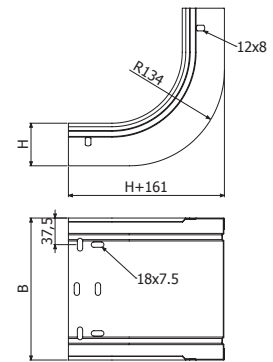
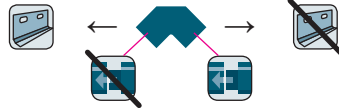


## CCERC



	B		H		PG		GC		i304	
	mm	inch	mm	inch	REF.	kg/u	REF.	kg/u	REF.	kg/u
CCERC 100x80	100	4"	80	3 1/7"	2/1466	0,66	2/1497	0,75	2/17859	0,66
CCERC 150x80	150	6"	80	3 1/7"	2/1467	0,79	2/1498	0,90	2/17860	0,79
CCERC 200x80	200	8"	80	3 1/7"	2/1468	0,92	2/1499	1,05	2/17861	0,92
CCERC 300x80	300	12"	80	3 1/7"	2/1470	1,19	2/1501	1,36	2/17862	1,19
CCERC 400x80	400	16"	80	3 1/7"	2/1471	1,46	2/1502	1,66	2/17863	1,46
CCERC 500x80	500	20"	80	3 1/7"	2/1472	1,72	2/1503	1,96	2/17864	1,72
CCERC 600x80	600	24"	80	3 1/7"	2/1473	1,99	2/1504	2,27	2/17865	1,99

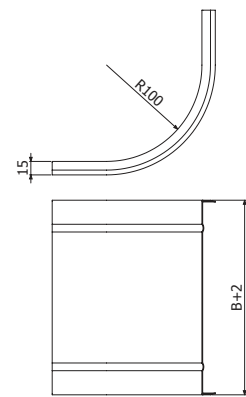
2x JUER



## TCCERC



	B		PG		GC		i304	
	mm	inch	REF.	kg/u	REF.	kg/u	REF.	kg/m
TCCERC 100	100	4"	2/1544	0,23	2/1551	0,27	2/3263	0,23
TCCERC 150	150	6"	2/1545	0,32	2/1552	0,37	2/3264	0,28
TCCERC 200	200	8"	2/1546	0,41	2/1553	0,47	2/3265	0,41
TCCERC 300	300	12"	2/1547	0,58	2/1554	0,67	2/3266	0,58
TCCERC 400	400	16"	2/1548	0,75	2/1555	0,88	2/3271	0,75
TCCERC 500	500	20"	2/1549	0,93	2/1556	1,08	2/17866	0,93
TCCERC 600	600	24"	2/1550	1,10	2/1557	1,28	2/4724	1,10

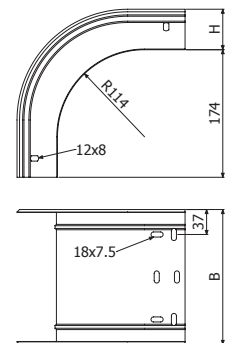
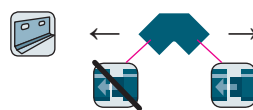


## CXERC



	B		H		PG		GC		i304	
	mm	inch	mm	inch	REF.	kg/u	REF.	kg/u	REF.	kg/u
CXERC 100x80	100	4"	80	3 1/7"	2/1580	0,58	2/1611	0,66	2/17867	0,58
CXERC 150x80	150	6"	80	3 1/7"	2/1581	0,67	2/1612	0,77	2/17868	0,67
CXERC 200x80	200	8"	80	3 1/7"	2/1582	0,77	2/1613	0,88	2/17869	0,77
CXERC 300x80	300	12"	80	3 1/7"	2/1584	0,96	2/1615	1,09	2/17870	0,96
CXERC 400x80	400	16"	80	3 1/7"	2/1585	1,14	2/1616	1,31	2/17871	1,14
CXERC 500x80	500	20"	80	3 1/7"	2/1586	1,33	2/1617	1,52	2/17872	1,33
CXERC 600x80	600	24"	80	3 1/7"	2/1587	1,52	2/1618	1,73	2/17873	1,52

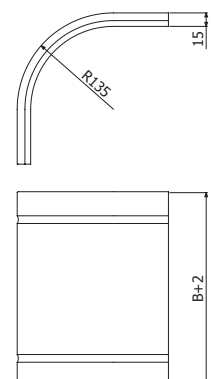
2x JUER



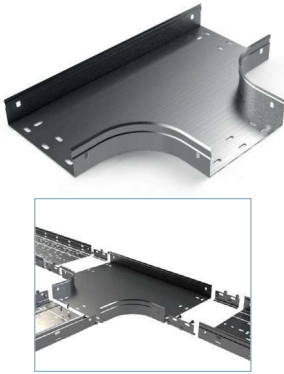
## TCXERC



	B		PG		GC		i304	
	mm	inch	REF.	kg/u	REF.	kg/u	REF.	kg/u
TCXERC 100x80	100	4"	2/1673	0,37	2/1704	0,43	2/17874	0,37
TCXERC 150x80	150	6"	2/1674	0,51	2/1705	0,59	2/17875	0,51
TCXERC 200x80	200	8"	2/1675	0,65	2/1706	0,75	2/17876	0,65
TCXERC 300x80	300	12"	2/1677	0,93	2/1708	1,08	2/17877	0,93
TCXERC 400x80	400	16"	2/1678	1,21	2/1709	1,40	2/17878	1,21
TCXERC 500x80	500	20"	2/1679	1,49	2/1710	1,73	2/17879	1,49
TCXERC 600x80	600	24"	2/1680	1,77	2/1711	2,05	2/17880	1,77

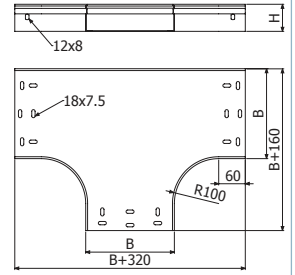
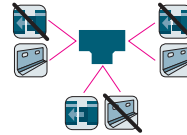


## TERC



	B		H		PG		GC		i304	
	mm	inch	mm	inch	REF.	kg/ud	REF.	kg/ud	REF.	kg/ud
TERC 100x80	100	4"	80	3 1/7"	2/1766	1,07	2/1797	1,22	2/17881	1,07
TERC 150x80	150	6"	80	3 1/7"	2/1767	1,38	2/1798	1,58	2/17882	1,39
TERC 200x80	200	8"	80	3 1/7"	2/1768	1,86	2/1799	2,12	2/17883	1,86
TERC 300x80	300	12"	80	3 1/7"	2/1770	2,57	2/1801	2,93	2/17884	2,57
TERC 400x80	400	16"	80	3 1/7"	2/1771	3,55	2/1802	4,05	2/17885	3,55
TERC 500x80	500	20"	80	3 1/7"	2/1772	4,70	2/1803	5,35	2/17886	4,70
TERC 600x80	600	24"	80	3 1/7"	2/1773	5,99	2/1804	6,83	2/17887	6,00

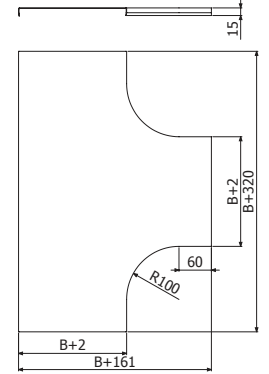
2 x JUER



## TTERC



	B		PG		GC		i304	
	mm	inch	REF.	kg/ud	REF.	kg/ud	REF.	kg/m
TTERC 100	100	4"	2/1844	0,45	2/1852	0,53	2/17888	0,46
TTERC 150	150	6"	2/1845	0,66	2/1853	0,77	2/17889	0,66
TTERC 200	200	8"	2/1846	0,89	2/1854	1,04	2/17890	0,89
TTERC 300	300	12"	2/1848	1,44	2/1855	1,68	2/17891	1,44
TTERC 400	400	16"	2/1849	2,09	2/1856	2,45	2/17892	2,10
TTERC 500	500	20"	2/1850	2,86	2/1857	3,35	2/17893	2,86
TTERC 600	600	24"	2/1851	3,74	2/1858	4,37	2/17894	3,74

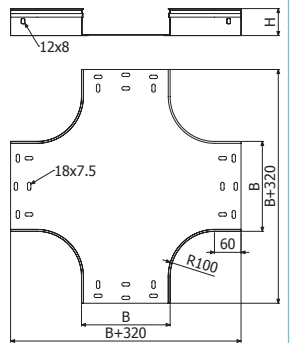
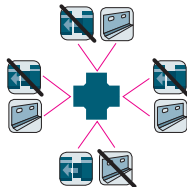


## CRERC

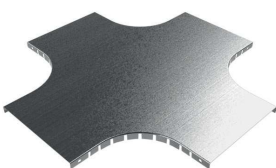


	B		H		PG		GC		i304	
	mm	inch	mm	inch	REF.	kg/ud	REF.	kg/ud	REF.	kg/ud
CRERC 100x80	100	4"	80	3 1/7"	2/1881	1,31	2/1912	1,50	2/17895	1,31
CRERC 150x80	150	6"	80	3 1/7"	2/1882	1,66	2/1913	1,89	2/17896	1,66
CRERC 200x80	200	8"	80	3 1/7"	2/1883	2,05	2/1914	2,34	2/17897	2,05
CRERC 300x80	300	12"	80	3 1/7"	2/1885	2,94	2/1916	3,36	2/17898	2,94
CRERC 400x80	400	16"	80	3 1/7"	2/1886	4,00	2/1917	4,56	2/17899	4,00
CRERC 500x80	500	20"	80	3 1/7"	2/1887	5,21	2/1918	5,93	2/17900	5,21
CRERC 600x80	600	24"	80	3 1/7"	2/1880	6,45	2/1919	7,49	2/17901	6,45

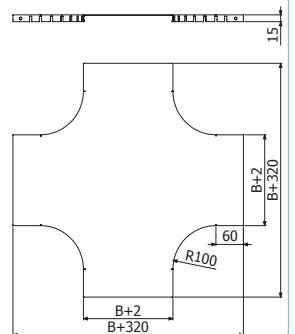
2 x JUER



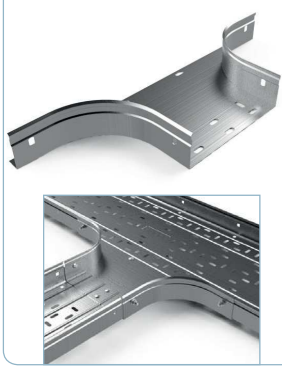
## TCRERC



	B		PG		GC		i304	
	mm	inch	REF.	kg/ud	REF.	kg/ud	REF.	kg/m
TCRERC 100	100	4"	2/1959	0,60	2/1967	0,70	2/17902	0,60
TCRERC 150	150	6"	2/1960	0,84	2/1968	0,99	2/17903	0,84
TCRERC 200	200	8"	2/1961	1,11	2/1969	1,30	2/17904	1,12
TCRERC 300	300	12"	2/1963	1,74	2/1971	2,04	2/17905	1,74
TCRERC 400	400	16"	2/1964	2,48	2/1972	2,90	2/17906	2,48
TCRERC 500	500	20"	2/1965	3,32	2/1973	3,89	2/17907	3,33
TCRERC 600	600	24"	2/1966	4,28	2/1974	5,01	2/17908	4,28

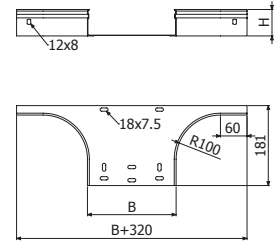


## AS



	B		H		PG		GC		i304	
	mm	inch	mm	inch	REF.	kg/ud	REF.	kg/ud	REF.	kg/ud
AS 100x80	100	4"	80	3 1/7"	2/1999	0,55	2/2031	0,63	2/17909	0,55
AS 150x80	150	6"	80	3 1/7"	2/2000	0,62	2/2032	0,71	2/17910	0,62
AS 200x80	200	8"	80	3 1/7"	2/2001	0,69	2/2033	0,79	2/17911	0,69
AS 300x80	300	12"	80	3 1/7"	2/2003	0,83	2/2035	0,95	2/17912	0,83
AS 400x80	400	16"	80	3 1/7"	2/2004	0,97	2/2036	1,11	2/17913	0,97
AS 500x80	500	20"	80	3 1/7"	2/2005	1,11	2/2037	1,27	2/17914	1,12
AS 600x80	600	24"	80	3 1/7"	2/2006	1,25	2/2038	1,44	2/17915	1,26

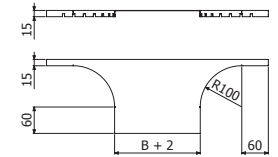
2 x JUER + 4/100 x B1 ( 2/4356 - EZ // 2/6826 - GC // 2/4925 - i304)



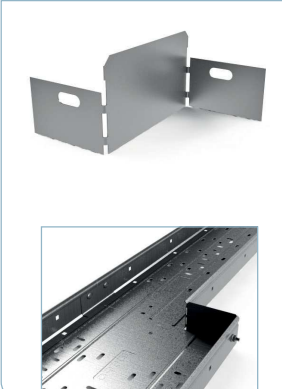
## TAS



	B		PG		GC		i304	
	mm	inch	REF.	kg/ud	REF.	kg/ud	REF.	kg/m
TAS 100	100	4"	2/8325	0,22	2/8332	0,26	2/17916	0,22
TAS 150	150	6"	2/8326	0,27	2/8333	0,31	2/17917	0,27
TAS 200	200	8"	2/8327	0,33	2/8334	0,38	2/17918	0,33
TAS 300	300	12"	2/8328	0,44	2/8335	0,51	2/17919	0,44
TAS 400	400	16"	2/8329	0,55	2/8336	0,63	2/17920	0,55
TAS 500	500	20"	2/8330	0,66	2/8337	0,76	2/17921	0,66
TAS 600	600	24"	2/8331	0,77	2/8338	0,88	2/17922	0,77

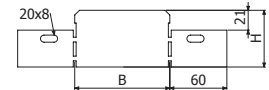


## REER

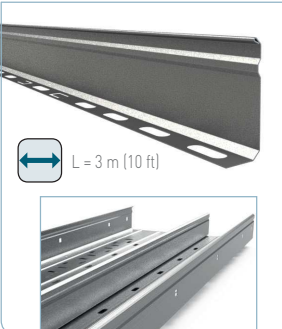


	B		H		PG		GC		i304	
	mm	inch	mm	inch	REF.	kg/ud	REF.	kg/ud	REF.	kg/m
REER 50x35	50	2"	35	1 3/8"	2/6290	0,03	2/6298	0,03		
REER 50x60	50	2"	60	2 3/8"	2/6291	0,04	2/6299	0,05	2/8767	0,04
REER 50x80	50	2"	80	3 1/7"	2/6292	0,06	2/6300	0,07	2/18120	0,06
REER 50x100	50	2"	100	4"	2/6293	0,08	2/6301	0,09		
REER 100x35	100	4"	35	1 3/8"	2/6294	0,04	2/6302	0,04		
REER 100x60	100	4"	60	2 3/8"	2/6295	0,06	2/6303	0,07	2/8768	0,06
REER 100x80	100	4"	80	3 1/7"	2/6296	0,08	2/6304	0,09	2/18121	0,08
REER 100x100	100	4"	100	4"	2/6297	0,11	2/6305	0,12		

2/100 x B1 ( 2/4356 - EZ // 2/6826 - GC // 2/4925 - i304)

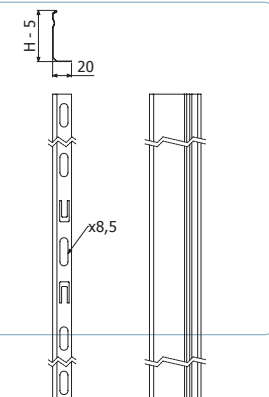


## PS



	H		PG		GC		i304	
	mm	inch	REF.	kg/m	REF.	kg/m	REF.	kg/m
PS 80	80	3 1/7"	2/3477	0,46	2/3481	0,63	2/11228	0,46

1/100 x B1 (500 ↔ 500 mm) ( 2/4356 - GS // 2/6826 - GC // 2/4925 - i304)



## B1



	L	Pap	EZ		GC		i304	
			REF.	kg/ud	REF.	kg/ud	REF.	kg/ud
B1-100	14	6	2/4356	0,77	2/6826	0,80	-	-
B1-100	20	6	-	-	-	-	2/4925	0,79

